



How can Space help inclusion and promote equality?

Space Café WebTalk

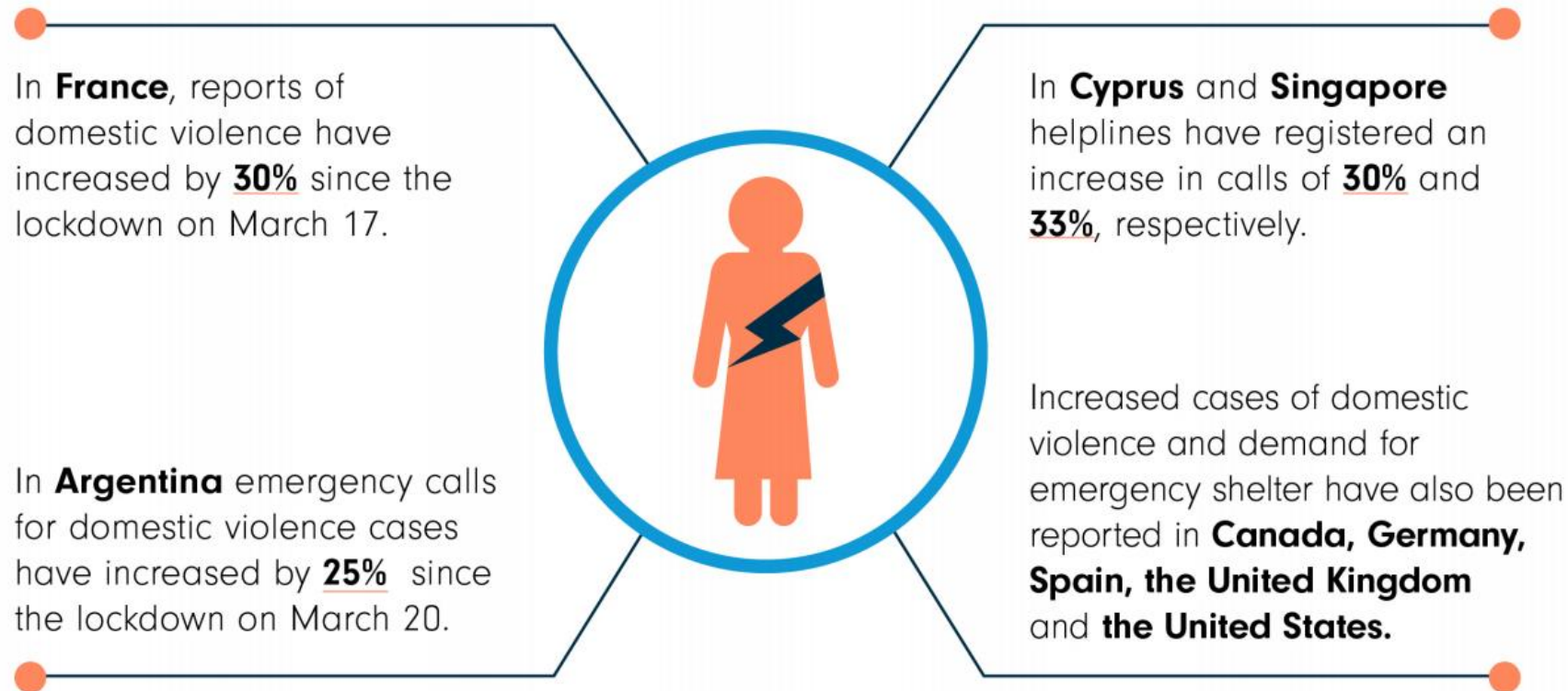
19 May 2020

Vera Pinto
European Commission DG DEFIS
(Defence Industry and Space)



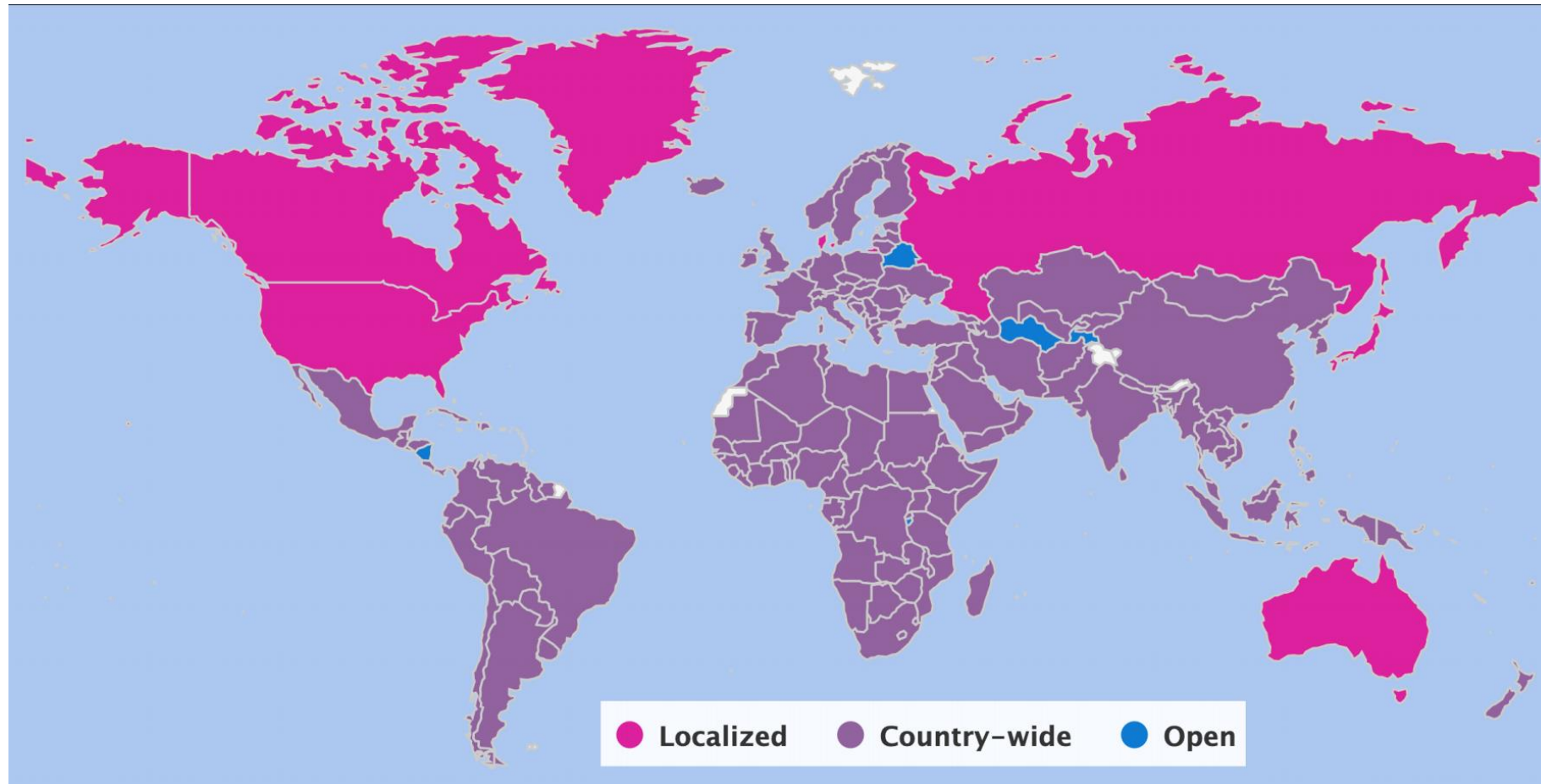
Source: UNDESA

Violence against Women and Girls and COVID19



Source: United Nations

COVID-19 Impact on children



Source: UNESCO

COVID19 Impact on Older Persons

COVID-19 AND OLDER PERSONS

Economic well-being

The pandemic may significantly lower older persons' incomes and living standards. Already, less than 20% of older persons of retirement age receiving a pension

Life and Death

Fatality rates are five times higher than global average. An estimated 66% of people aged 70 and over have at least one underlying health condition

Mental health

Physical distancing can take a heavy toll on our mental health. Living alone and being more digitally included than others, the risks are higher for older persons

Vulnerability

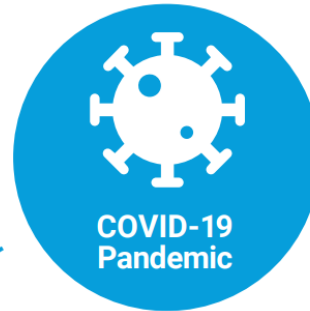
Essential care that older persons often rely on is under pressure. Almost half of COVID-19 deaths in Europe occurred in long term care settings. Older women often provide care for older relatives increasing their risk to infection

Responders

Older persons are not just victims. They are also responding. They are health workers, carers and among many essential service providers

Abuse and neglect

In 2017, 1 in 6 older persons were subjected to abuse. With lockdowns and reduced care, violence against older persons is on the rise



Global Population of Persons with Disabilities

15%

An estimated 15% of the world's population have a disability.



1 in 5

One in five women is likely to experience disability during her life.



46%

46% of persons aged 60 years and over have a disability.



1 in 10

One in ten children is a child with a disability.



Global population of persons with disabilities (IASC Guidelines, 2019, Inclusion of Persons with Disabilities in Humanitarian Action)

Source: United Nations

A Union of Equality

“Strengthening Europe’s commitment to inclusion and equality in all of its senses, irrespective of sex, racial or ethnic origin, religion or belief, disability, age or sexual orientation.”

Commissioner Dalli Mission Letter

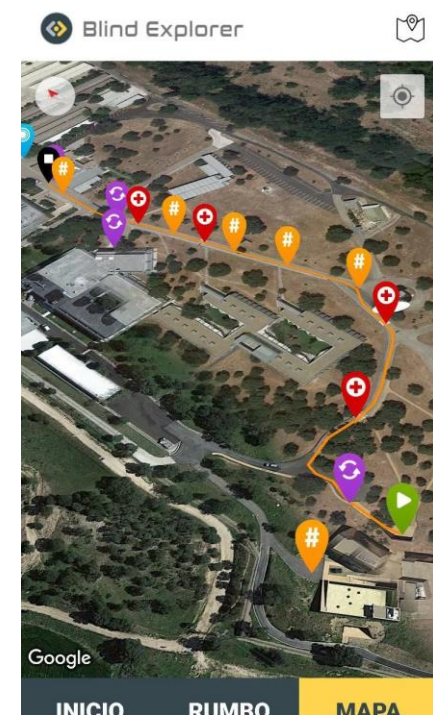
What can Space do for Equality and Inclusion?



Space enabled applications fostering equality and inclusion



NIMB



Blind Explorer

More examples: <https://www.gsa.europa.eu/GNSS4Crisis>

Space enabled applications fostering equality and inclusion



More examples: <https://www.gsa.europa.eu/GNSS4Crisis>

On-going opportunities



<https://www.galileo-masters.eu/>



<https://www.copernicus-masters.com/>

<https://www.sentinel-hub.com/contest>

Future opportunities



12 & 13 SEPTEMBER
Leiden, Netherlands



SPACE FOR EQUALITY & INCLUSION CHALLENGE

Use space data to make the world more inclusive and equal in all of its senses – irrespective of people's sex, racial or ethnic origin, religion or belief, disability, age or sexual orientation. The winner gets an extra 250 euro.

<https://www.sbicnoordwijk.nl/copernicus-hackathon-2020/>



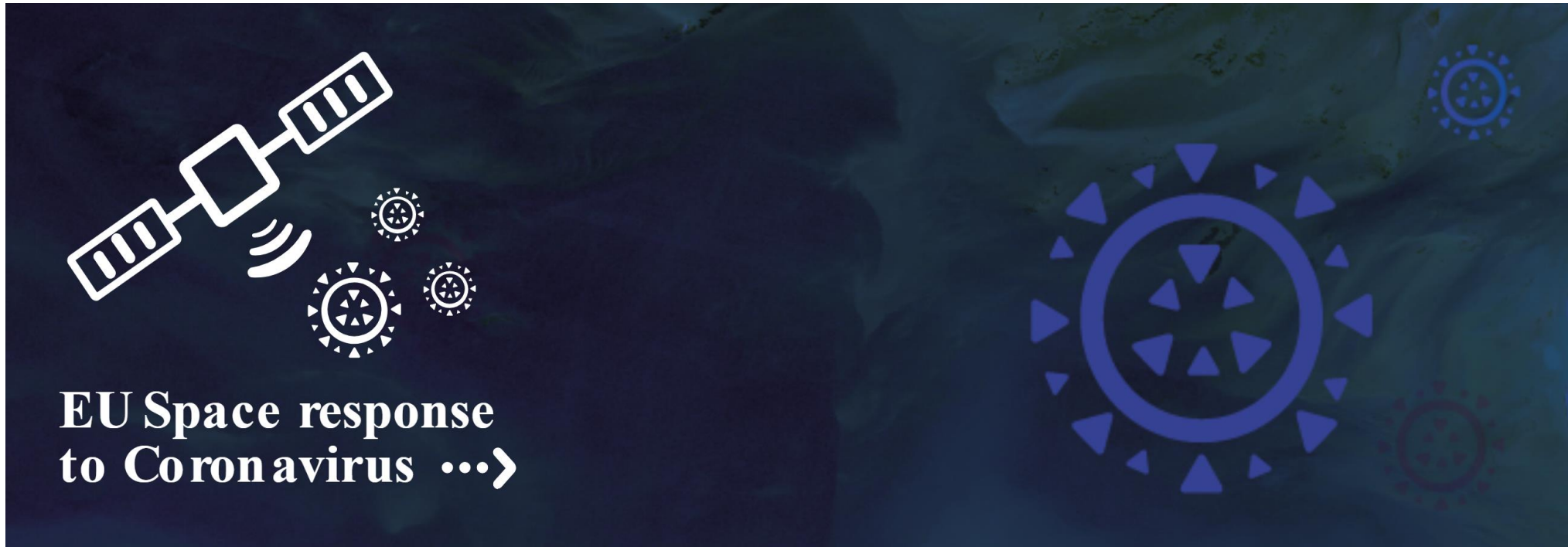
Think Equal, Innovate for Inclusion!



Email:
vera.pinto@ec.europa.eu

Backup slides

Stay Tune



<https://www.euspace-programme.eu/coronavirus>

How Space can help?

4 QUALITY
EDUCATION



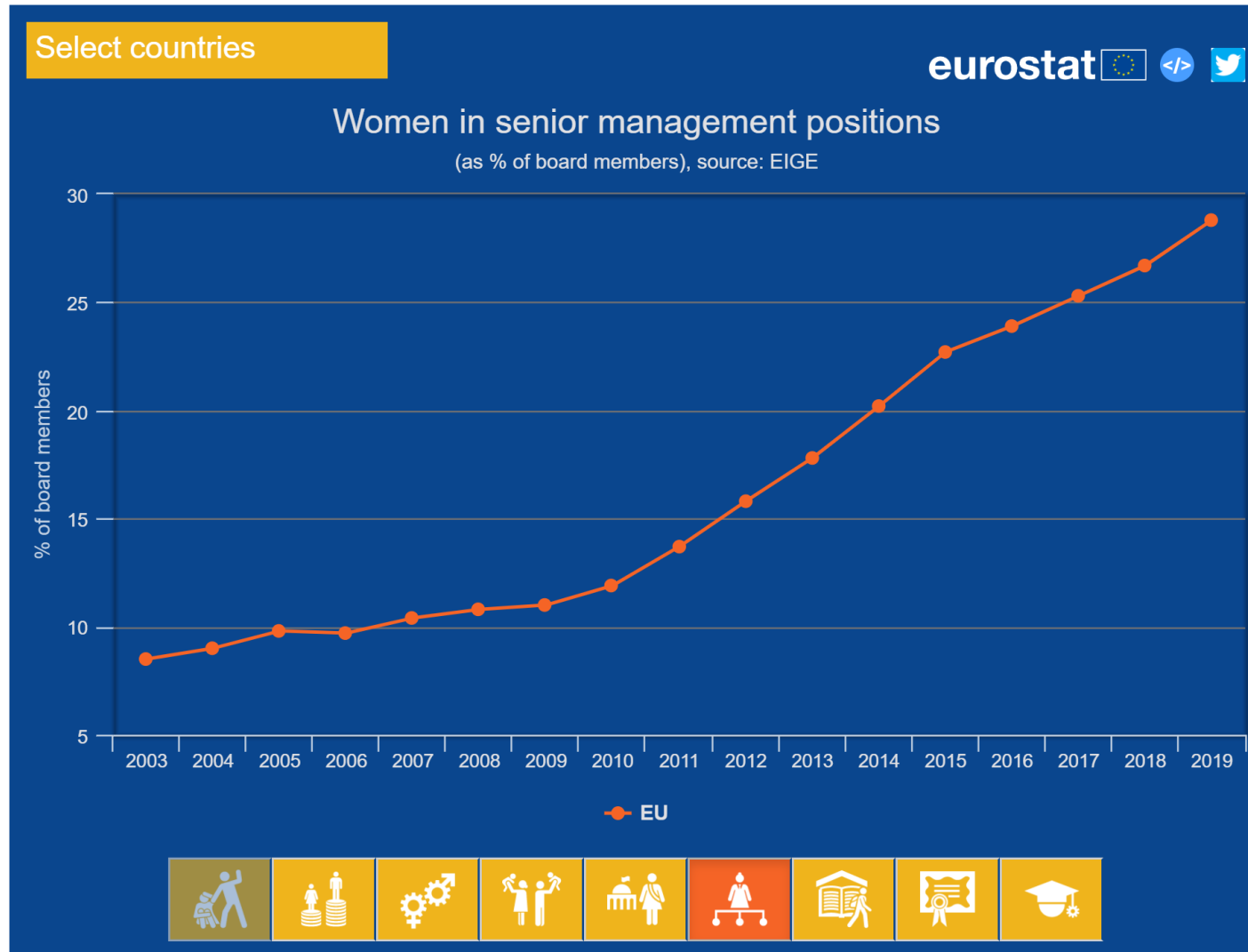
5 GENDER
EQUALITY



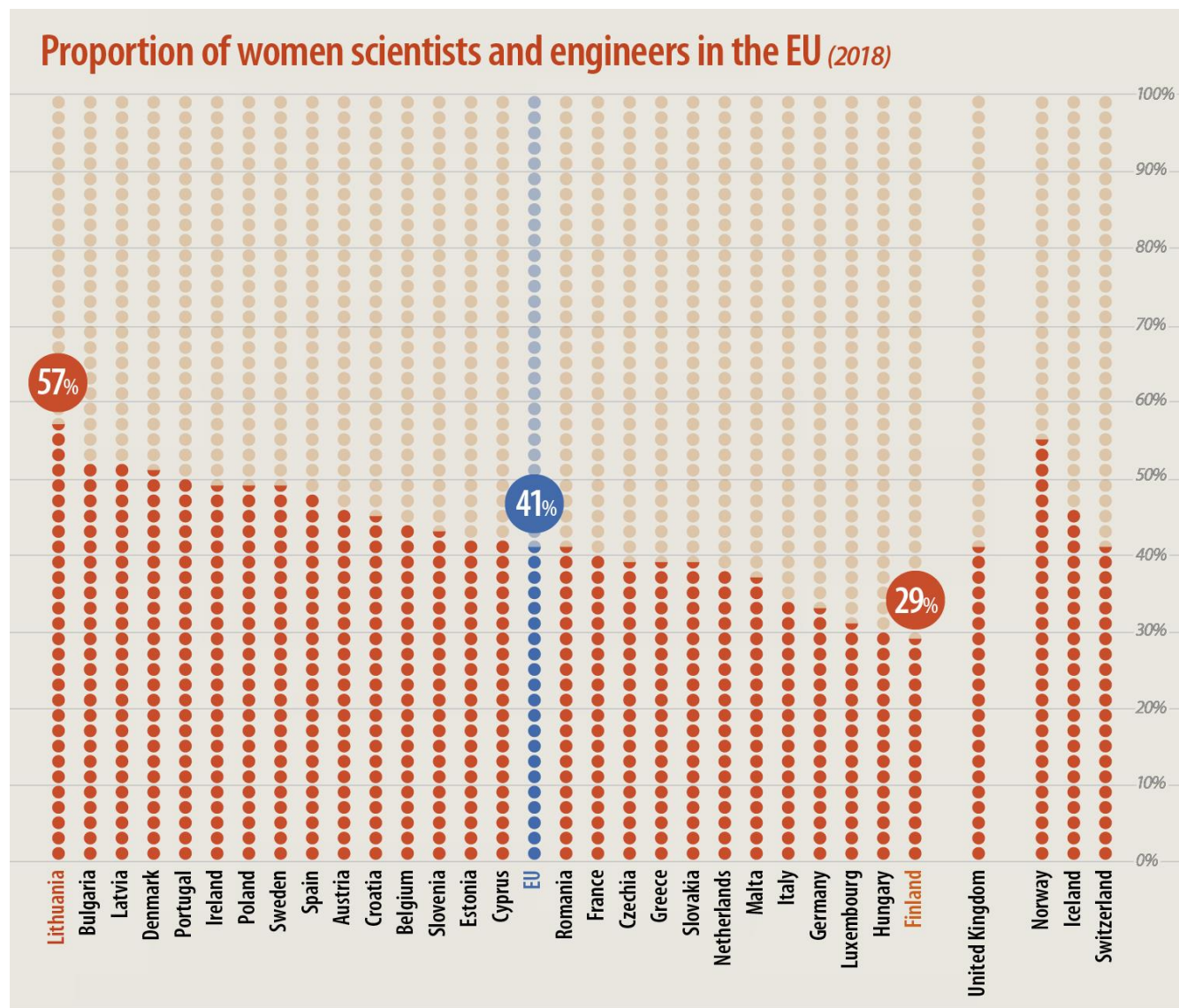
10 REDUCED
INEQUALITIES



Women in Senior Management Positions in EU



Women in science and technology



Closing the gender pension gap?

